



# NL-2 Anchor Seal



The NL-2 Anchor Seal was designed as a replacement for lead seals. This seal type is called "Anchor" and contains a polycarbonate body, which interlocks with a polycarbonate insert. It is available as standard with clear body and insert with 18" attached wire. Available in other colors with minimum of 50,000 units.

## APPLICATIONS

- Electric/Gas/Water Meters
- Bulk Tanker Valves/Hatches
- Storage Devices
- Taxi Meters
- Ammunition Boxes
- Drum-Ring Closures
- Valves
- ATM Cassettes

## FEATURES

- Polycarbonate & stainless steel construction.
- Flexible wire, available in 18" length.
- Clear body shows immediate evidence of tampering.
- Double-locking mechanism provides improved strength and security.
- Individually numbered and stamped with company name & logo on body only.
- Also available without wire, to be used with cut wire or spooled wire (sold separately).

## MATERIAL

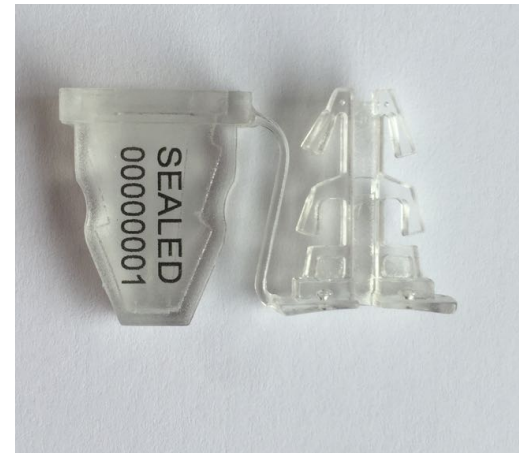
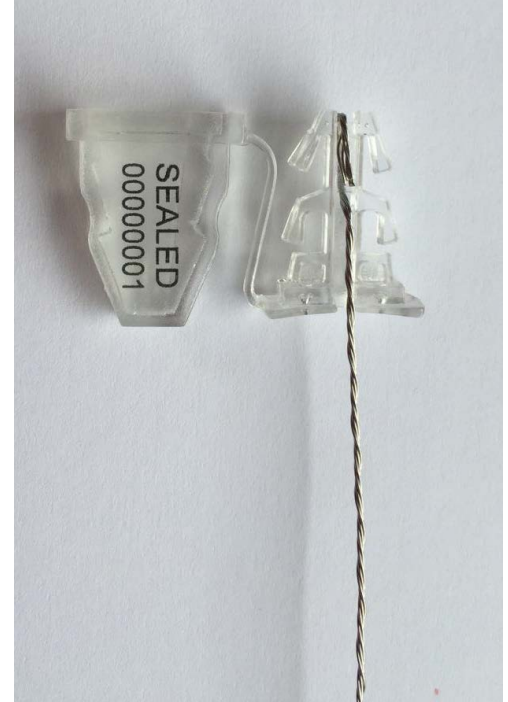
- Seal: Polycarbonate Plastic
- Wire: Stainless Steel

## DIMENSIONS

Wires: 18" Attached Wire

## MARKING/PRINTING

- Numbering: 7 digits, and logo laser marked.
- Numbered on body only.



PEOPLE'S CHOICE AWARD FOR MOST INNOVATIVE PRODUCT

Seals shown not actual size.



# NL-2 Anchor Seal



## SPECIAL COLORS

Yellow/Red/Blue/Green available as custom order



## PACKAGING

- 50/bag
- 20 bags/box
- Total of 1,000/box

Box Dimensions:

- Size: 47" x 16.3" x 7.87"
- Volume: 2.38 in 3

