

ABCD Status

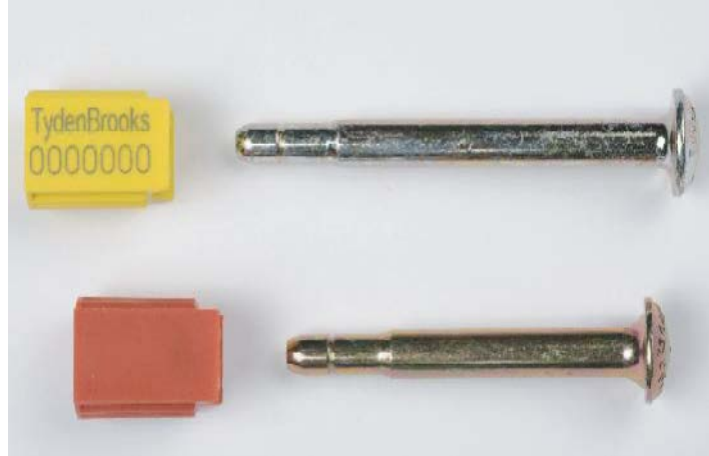
- A - Stock item generically marked.
- B - Locally marked in house.
- C - Factory manufactured and marked.
- D - Price and delivery on application (long lead item).

Product ratings options:

- A - Lasered TBE & numbered.
- B - Lasered to instruction.
- C - Large customised quantities.

Rail cars Intermodal containers
Trailer doors

ISO 17712 compliant high security bolt seal consisting of a steel bolt available in a 5/16" long bolt and 1/4" short bolt version and a plastic coated steel locking chamber. Specifically designed for ISO containers and high value cargo shipments. Both are C-TPAT compliant.



Features

- ISO 17712.2 and C-TPAT compliant.
- Locking insert spins freely to confirm seal integrity.
- High impact plastic cover on locking chambers clearly indicates tampering.
- Removed with bolt cutters.
- Metal locking end encased in a consecutively numbered, coloured body.
- Short bolt version is 73mm long x 9.4mm (3/8") dia
- Long bolt version is 89mm long x 7.9mm (5/16") dia
- 'H' on bottom of body base indicating 'High Security'.

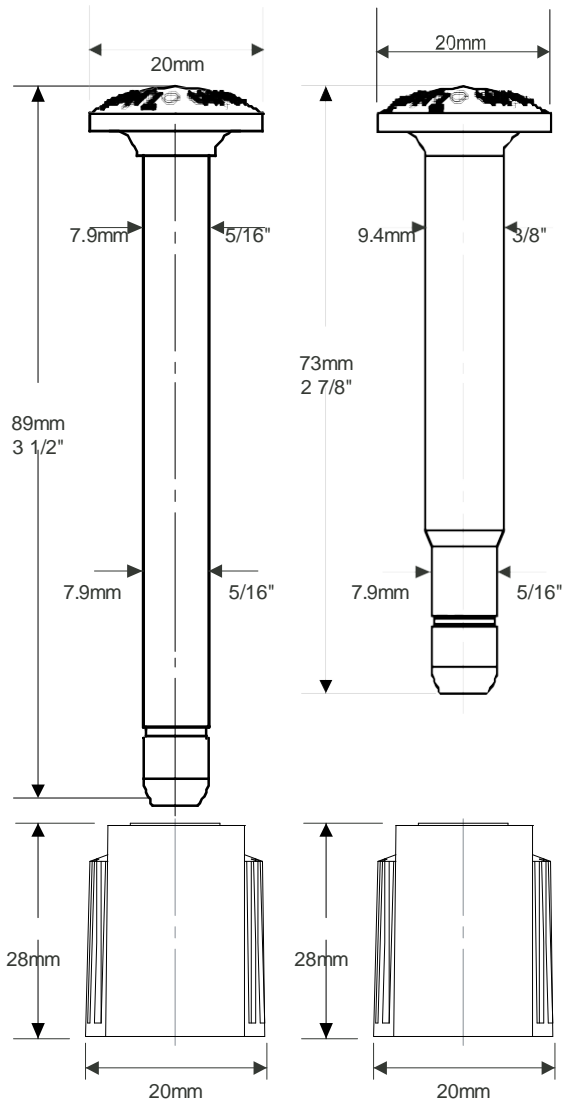
Specifications

- Made of carbon steel with zinc chromate finish.
- ABS plastic body on locking case.
- Average pull-apart force is 4,713 lbs (2,138 kg, 21.0 kN).
- Average cutting force (shear) is 5,477 lbs (2,484 kg, 24.4 kN).
- Average impact force is 30-29 ft-lb (41-53 Nm).
- Bending moment: 63 ft-lb (85 Nm).

Available in yellow or light blue lasered TBE and numbered.
Plain red, yellow, white and light blue for in-house lasering. The bolt can also be lasered.

Packaging details

Standard Packaging: 25 bodies per bag/25 bolts per bag
200 Seals per Carton.
Carton Dimensions: 27cm (w) x 27cm (l) x 30cm (d).
Carton gross weight: 12Kg.



Intermodal II Bolt Seal